

TECHNICAL WORKING GROUP ON REINTEGRATION AND DEVELOPMENT

AT A GLANCE

WHAT IS THE TECHNICAL WORKING GROUP?

The **Technical Working Group (TWG) on Reintegration and Development (R&D)** was established to create and operate in a technical working space, where migration experts and practitioners on the one hand, and development actors on the other, can explore possibilities for closer, more coherent and pragmatic cooperation benefitting both reintegration and development efforts simultaneously, and ultimately returnees, encompassed in a practical and non-political atmosphere.



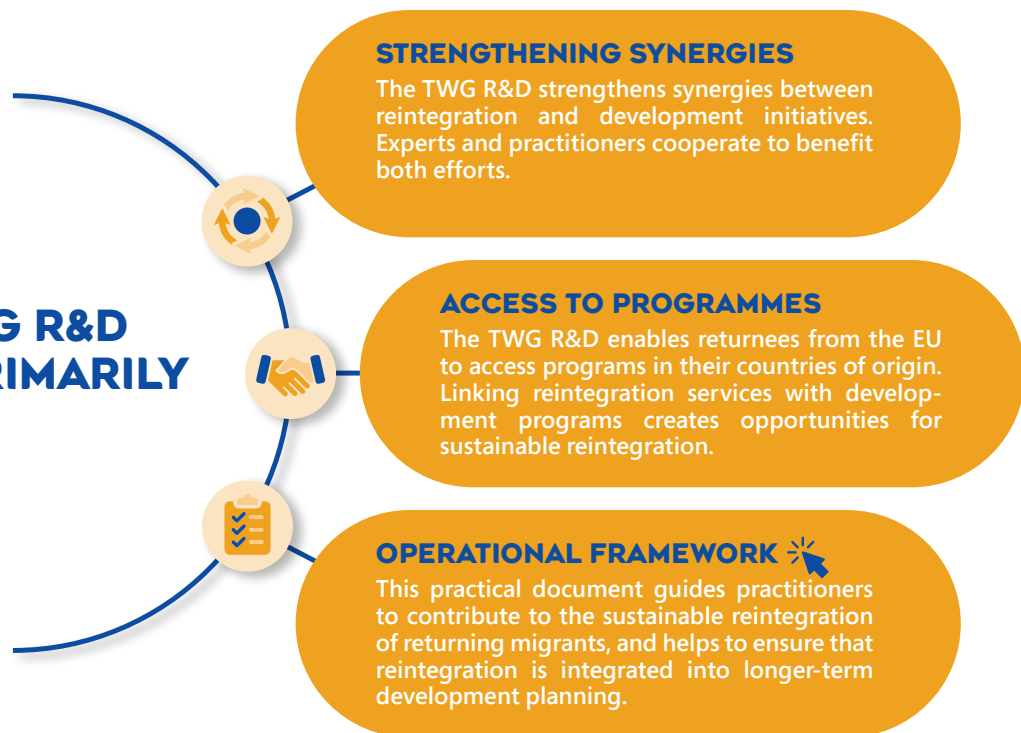
OBJECTIVES OF THE TWG R&D

The TWG R&D has evolved given more shape to its purpose and objectives. EU Member States (MS) and development stakeholders have become more and more interested in navigating into possibilities that could incorporate reintegration to longer-term development planning.

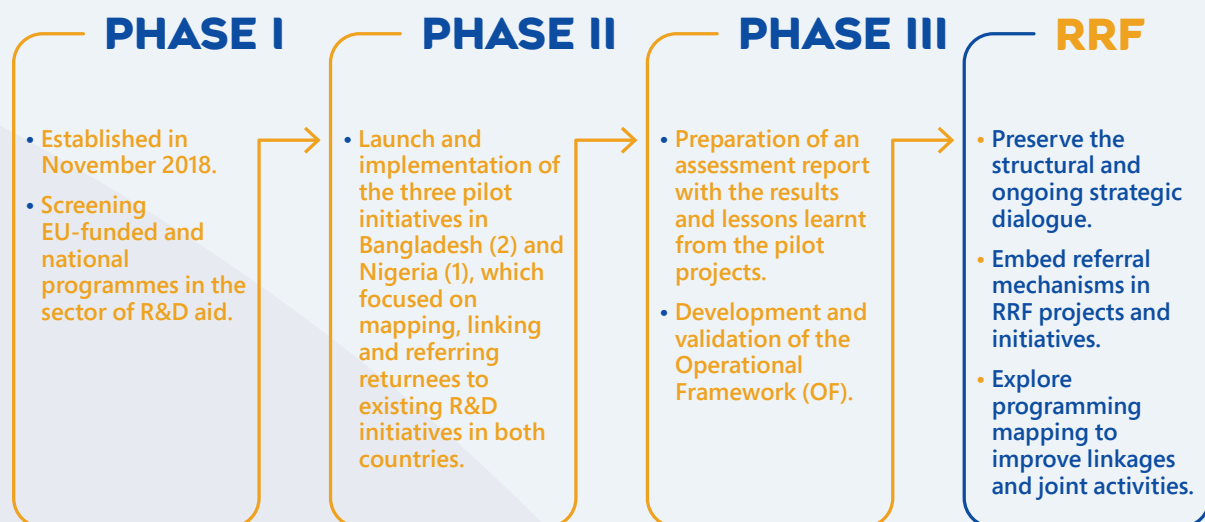
The TWG R&D also represents an opportunity for its members to share their ideas on the subject matter, identify complementarities and align their objectives, striving towards a coherent programming approach to reintegration.

* EU: European Union

THE TWG R&D AIMS PRIMARILY AT:



EVOLUTION OF THE TWG R&D OBJECTIVES





STRENGTHENING SUSTAINABLE REINTEGRATION

THE IMPORTANCE OF LINKING REINTEGRATION AND DEVELOPMENT

Linking reintegration services with existing development programmes is a key focus of the Technical Working Group on Reintegration and Development (TWG R&D), because it creates opportunities to support returning migrants and facilitate their sustainable reintegration. In this section, we explore why this linkage is crucial and how it is achieved.



MORE OPPORTUNITIES

Linking reintegration services with existing development programmes creates more opportunities to support returning migrants, whilst facilitating their sustainable reintegration.

MORE COHERENT COOPERATION
The creation of a technical working space, where migration and development practitioners and experts can convene to explore options for closer and coherent cooperation in a non-political setting is a key component for the TWG R&D.



A FRAMEWORK FOR ACTION

The **Operational Framework** is a practical document to guide and assist the work of practitioners from both fields to contribute to the sustainable reintegration of returning migrants.

THE TWG R&D TODAY



CURRENT STATE OF PLAY

The TWG R&D will continue its activities under the **Return and Reintegration Facility (RRF)** umbrella, enabling the continuation of an informal and technical space to discuss, exchange and steer the implementation of the Operational Framework Reintegration & Development.

The TWG R&D meets on a regular basis, in person or virtually, to discuss a variety of topics related to the implementation of the OF. *Ad hoc* meetings can equally be organised upon request.

TWG R&D CRITERIA FOR MEMBERSHIP

STATUS	WHO CAN JOIN?	CHARACTERISTICS	ATTENDANCE
Core members	<ul style="list-style-type: none"> Return and reintegration departments/agencies (migration authorities) National/international development agencies/institutions 	National institutions from an RRF MS with a clear mandate in the field of return/reintegration or development	All meetings
Observers and / or contributors	<ul style="list-style-type: none"> Research institution (Local) reintegration partners in countries of return Civil society organisations (non-governmental-organisations, international non-governmental-organisations) with specific work areas within return and reintegration 	<ul style="list-style-type: none"> Partner of a Core Member involved in a specific relevant action (e.g. research activity relevant to TWG R&D) Institution (nominated by a Member) with a relevant link to the work of the TWG R&D Institution (nominated by a Member) involved by the implementation of some specific activities, e.g. mapping 	Specific thematic meetings (or sessions) and/or ad hoc meetings

TWG MEMBERS WILL ACT AS A “SOUNDING BOARD” IN THE IMPLEMENTATION OF THE OPERATIONAL FRAMEWORK REINTEGRATION & DEVELOPMENT BY:



Playing an advisory role in providing guidance and validation of certain work processes and items



Continuing to steer the collaborative dialogue



Supporting the establishment of relevant partnerships

MEMBERS

MEMBER STATES



Belgium (co-chair)



Austria



Denmark



Finland



France



Germany



Iceland



Netherlands



Norway



Portugal



Sweden



Switzerland

DEVELOPMENT ACTORS



CONTRIBUTORS



OTHERS



IMPLEMENTING PARTNERS



Funded by



Implemented by

